



WWW.RUSH-CO.COM • Rush-Co Buildings Catalog • Rush-Co reserves the right to change products as required

COVERS FOR ALL BRANDS!

WWW.RUSH-CO.COM • Rush-Co Rushmore Buildings Catalog • Rush-Co reserves the right to change products as required

A large, white, arched Quonset hut stands against a clear blue sky. The structure features a concrete base. On the left, a smaller entrance is open, revealing a dark interior. To the right, a large roll-up door is partially unrolled. A small logo is visible on the upper right side of the white fabric. The ground in front is dry and sandy.



Roll-up Doors

Operate with a crank handle and u-joint rolling the door from bottom up. Roll-up doors are similar in operation to roll tarp systems on grain trailers.



END OPTIONS

Valance



Solid End



Door End



COVERS FOR ALL BRANDS!

WWW.RUSH-CO.COM • Rush-Co Rushmore Buildings Catalog • Rush-Co reserves the right to change products as required

A large, white, arched tent structure, possibly a temporary shelter or storage unit. The tent has a dark green base and a curved roof. The roof is made of a white material, and the base is made of a dark green material. The tent is set up on a dirt ground, and there are trees in the background.



A photograph showing the interior of a large, arched greenhouse. The structure is covered in white plastic with a prominent red and white striped archway. A large white door is visible in the background, and the ground is covered in dark soil. A portion of a red car is visible on the left side of the frame.





A long, modern agricultural building, possibly a greenhouse or a covered walkway, with a white, arched roof and a concrete base. The structure is supported by a series of vertical metal poles. The building is situated in a rural area with green grass and a blue sky in the background.



A photograph of a long, low-profile building under construction. The building has a concrete base and a large white tarp covering the upper section. Scaffolding is visible on the roof structure. The ground in front of the building is dirt and snow.

To SEE THE CURTAIN VIDEO
SCAN HERE



POWER VENTILATION SYSTEMS

Our “pivot-arm technology” (Patent No. 9255418) allows for the affordable and easy operation of ventilation regulation on a variety of buildings at the flip of a switch. This fully automatic system can accommodate buildings up to 600 feet in length per motor system. Most components come preassembled for ease of installation. These Powered Ventilation Systems (PVS) provide superior quality Ag curtains for multiple different applications throughout the industry. The 12.5 oz woven high density polyethylene coated fabric allows natural light into the building and creates an outdoor-like atmosphere while protecting the livestock from the elements.

SYSTEM MODELS

Bottom Drive Two Tube System:

Heights 2’ or 4’ (Upper Curtain)

- Fabric rolls up on bottom tube
- Single Drive will operate up to 600’
- Most commonly used as upper vent curtain
- Popular for lower cost smaller curtains



Center Drive Three Tube System:

Heights 6’ 8’ 10’ 12’ (Lower Curtain)

- Fabric rolls up on center tube
- Single Drive will operate up to 600’

Any Duplex (combination) of Bottom Drive System and/or Center Drive System is readily available for openings up to 12’ in height- other sizes can be customized

- When ordered in Duplex the Main Drive Supports are full height with both drives installed.

Ease of Installation & Operation

- Simple drum switch operation - Opens in less than 60 seconds
- System can be set or stored in partially opened positions
- Tubing is swaged to aid with assembly
- Wind tube brackets allow for quicker and safer curtain installation
- Drive assembly comes fully wired and assembled



Durable By Design

- Structural tubing is industrial grade and galvanized inside and out
- Metal brackets are heavier and high strength by design
- All industrial tubing is galvanized and brackets are zinc plated
- Curtain is constructed with UV treated PE fabric and industrial thread
- All components are engineered for industry leading product life
- The operating switch, motor, and electrical are outdoor NEMA rated

Fabric Options

- 12.5oz UV treated PE fabric is recommended for all Systems - Colors: *Fog, White, Red, Green, Brown, Blue, Silver*
- 6oz UV treated PE fabric (value fabric for replacement curtains) - Colors: *Fog, Opaque is Black one side & White one side*
- 18oz PVC is used for industrial divider curtain applications - Colors: *White, Black, Gray, Green, Blue, Tan, Red, Maroon*
- 13oz Mesh is used for hay and industrial curtain applications - Color: *Black*





24' MONO-TUBE BUILDING



30' MONO-TUBE BUILDING



36' MONO-TUBE BUILDING



36' WIDE TRUSS BUILDING

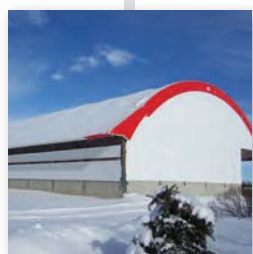


80' WIDE TRUSS BUILDING

THE perfect solution
TO cover what you
value



40' WIDE TRUSS BUILDING



70' WIDE TRUSS BUILDING



44' WIDE TRUSS BUILDING



70' WIDE HP TRUSS BUILDING



100' WIDE TRUSS BUILDING | 120' WIDE TRUSS BUILDING | 140' WIDE TRUSS BUILDING



45' WIDE TRUSS BUILDING



60' WIDE HP TRUSS BUILDING



60' WIDE TRUSS BUILDING

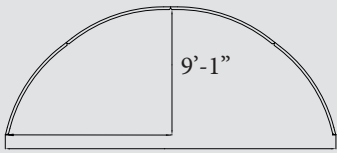


50' WIDE TRUSS BUILDING

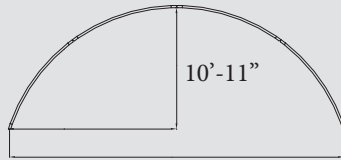


50' WIDE LOW PROFILE TRUSS BUILDING

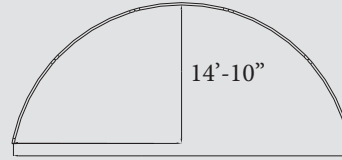
COVERS FOR ALL BRANDS!



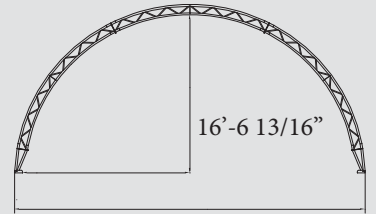
24' MONO-TUBE BUILDING



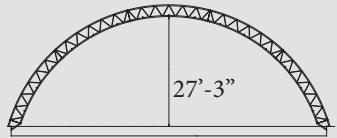
30' MONO-TUBE BUILDING



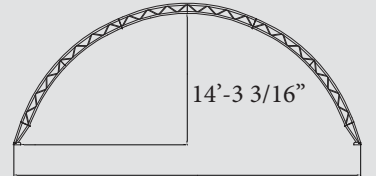
36' MONO-TUBE BUILDING



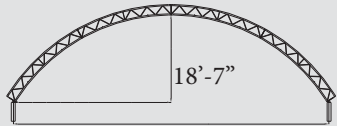
36' WIDE TRUSS BUILDING



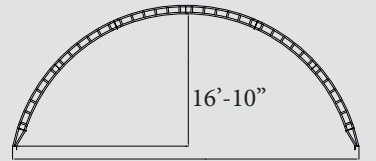
80' WIDE TRUSS BUILDING



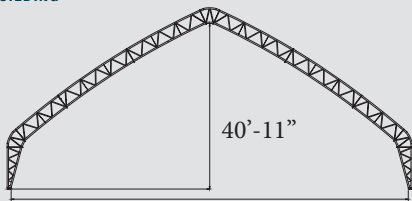
40' WIDE TRUSS BUILDING



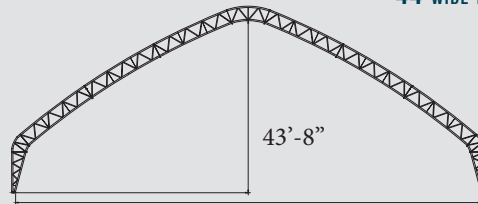
70' WIDE TRUSS BUILDING



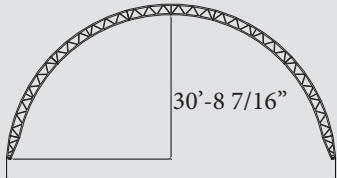
44' WIDE TRUSS BUILDING



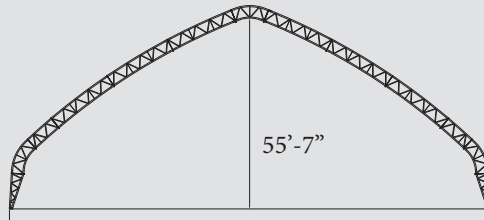
100' WIDE TRUSS BUILDING



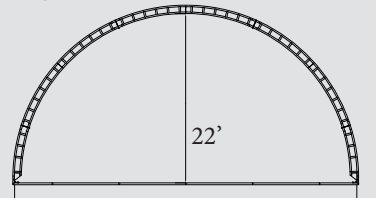
120' WIDE TRUSS BUILDING



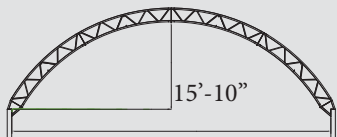
70' WIDE HP TRUSS BUILDING



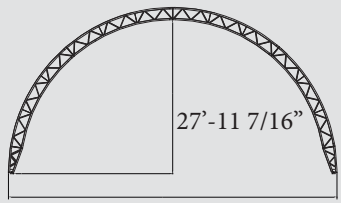
140' WIDE TRUSS BUILDING



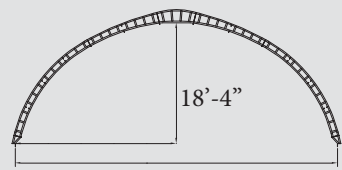
45' WIDE TRUSS BUILDING



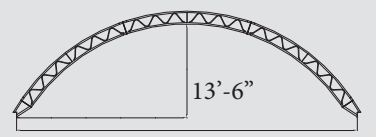
60' WIDE TRUSS BUILDING



60' WIDE HP TRUSS BUILDING



50' WIDE TRUSS BUILDING



50' WIDE LOW PROFILE TRUSS BUILDING

Rushmore Buildings Profiles



1.866.776.5617

RUSHMOREBUILDINGS.COM

BEEF & DAIRY FACILITIES

Rushmore Buildings have become popular among livestock producers due to their cost and labor saving features. As beef and dairy operations continue to grow and expand, larger and more economical solutions are needed for housing your livestock. Providing a safe and secure environment for your livestock is the goal of any feedlot manager.

Comfort is the key to any beef operation, for your herd as well as for yourself. With a building from Rush-Co, you can take reassurance in the fact that your cattle will be less stressed, more relaxed and a lot more comfortable than in an outdoor feedlot. The casual, positive environment means your cattle will have a greater chance at higher, faster weight gain, and that can mean more profit for you.

Rushmore Buildings can provide a solution to help protect your Livestock and benefit your productivity.



FEATURES

Interior Climate with Ultimate Ventilation

Our woven high-density polyethylene-coated covers allow natural light into the building and creates an outdoor-like atmosphere while offering protection from the heat of summer and the cold of harsh winters. With the options of ridge vents, side curtains and open soffit eaves, you can control the atmosphere to create the desired environment for optimum production. Due to the nature of the cover material it provides UV protection allowing our buildings to remain 10-20 degrees cooler in the summer. Our fabric covers have non-conductive properties that reduce the transmission of heat and cold, making the building feel cooler on hot days and warmer on cold days.

Open Spaces Offer Feeding Options

Rushmore Buildings sit on the exterior walls and offer wide-open, column-free space inside. This gives you the opportunity to set up your interior arrangement the way you see fit and offers the option of feeding inside down a lane or adding a 5-foot eave for exterior feeding leaving more livestock area inside.

Unlimited Options

Our buildings have many other uses other than cattle confinement. We realize your operation has more protection needs than just your herd, that is why we offer many sizes of buildings. For equipment, feed, hay storage or use as a shop, Rushmore Buildings is the perfect solution!



BENEFITS

- * Rushmore Buildings come with a 15-year pro-rated warranty
- * Reduces the stress from muddy outdoor pens
- * Increase feed efficiency and rate of gain by keeping your livestock out of the elements
- * Natural ventilation increases the quality of air for your herd, reducing respiratory problems
- * Building design accommodates various floor plans
- * Save on energy costs with little or no daytime lighting and less at night due to the reflective nature of the cover
- * Reduce outside noise and diminish indoor echoing compared to traditional buildings
- * Built with galvanized steel making the structure non-corrosive

A Partnership to Benefit beef and Dairy Producers: Rushmore Buildings & your local Dealer

1.866.776.5617

www.RushmoreBuildings.com

PUBLIC NOTICE
Clay County Board of Adjustment to Hold Public Hearing On Appeal of Conditional Use Permit

Notice is hereby given that a Public Hearing will be held before the Clay County Board of Commissioners, acting as the Board of Adjustment, at 10:00 am on July 30, 2019 at the Clay County Courthouse to consider the following: An appeal by the Living River Group, Sierra Club of the approval by the Clay County Planning Commission of a Conditional Use permit granted to Travis Mockler for expansion of an Animal Feeding Operation from Small to Medium.

All interested persons are encouraged to attend this public hearing. Those interested persons not able to attend are invited and encouraged to send written comments before July 29, 2019 to the Clay County Zoning Administrator, 211 W. Main Street, Suite 203, Vermillion, SD, 57069.

Cynthia Aden
Zoning Administrator
Carri Crum
Clay County Auditor
Publish: July 18/19, 2019